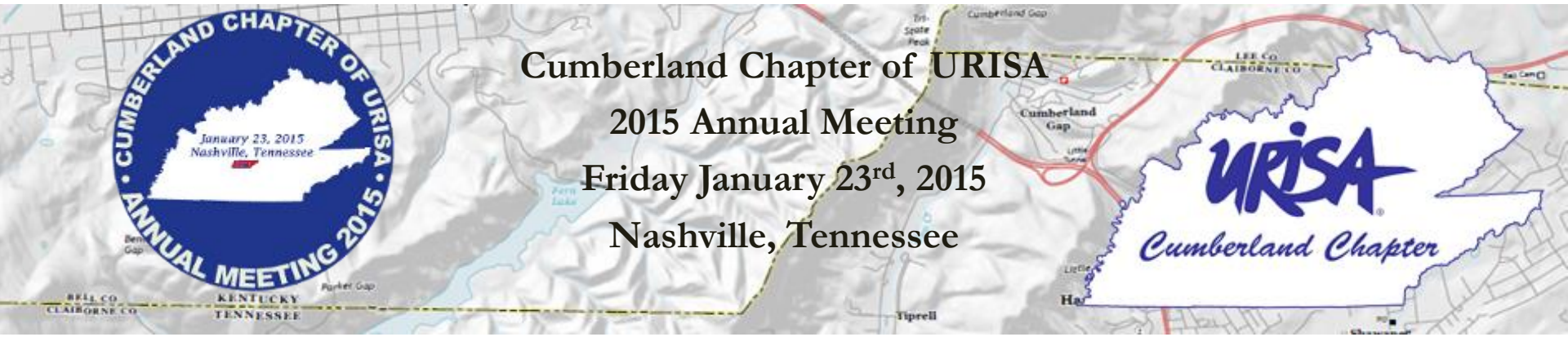


OPEN DATA:

Realizing The Essence and Promise of GIS; With Examples from Kentucky and Others

Demetrio P. Zourarakis, Ph.D., GISP, CMS-GIS/LIS, CMS-RS
GIS/RS Analyst, Kentucky Division of Geographic Information



... In the beginning

Open Government Data Principles

Government data shall be considered open if it is made public in a way that complies with the principles below:

1. Complete All public data is made available. Public data is data that is not subject to valid privacy, security or privilege limitations. 2. Primary Data is as collected at the source, with the highest possible level of granularity, not in aggregate or modified forms. 3. Timely Data is made available as quickly as necessary to preserve the value of the data. 4. Accessible Data is available to the widest range of users for the widest range of purposes. 5. Machine processable Data is reasonably structured to allow automated processing. 6. Non-discriminatory Data is available to anyone, with no requirement of registration. 7. Non-proprietary Data is available in a format over which no entity has exclusive control. 8. License-free Data is not subject to any copyright, patent, trademark or trade secret regulation. Reasonable privacy, security and privilege restrictions may be allowed. Compliance must be reviewable.

The Annotated 8 Principles of Open Government Data

December 7-8, 2007 – Sebastopol, CA

<http://opengovdata.org/>

... In the beginning (II)

The Open Definition

The [Open Definition](http://opendefinition.org/) sets out principles that define “openness” in relation to **data and content**.

It makes **precise** the meaning of “open” in the terms “**open data**” and “**open content**” and thereby ensures **quality** and encourages **compatibility** between different pools of open material.

It can be summed up in the statement that:

“Open means **anyone** can **freely access, use, modify, and share** for **any purpose** (subject, at most, to requirements that preserve provenance and openness).”

Put most succinctly:

“Open data and content can be **freely used, modified, and shared** by **anyone** for **any purpose**”

<http://opendefinition.org/>



BRIEFING ROOM

ISSUES

THE ADMINISTRATION

PARTICIPATE

1600 PENN

Search

[Home](#) • [Briefing Room](#) • [Presidential Actions](#) • [Executive Orders](#)

The White House

Office of the Press Secretary

For Immediate Release

May 09, 2013

Executive Order -- Making Open and Machine Readable the New Default for Government Information

EXECUTIVE ORDER

MAKING OPEN AND MACHINE READABLE THE NEW DEFAULT FOR GOVERNMENT INFORMATION

By the authority vested in me as President by the Constitution and the laws of the United States of America, it is hereby ordered as follows:

Section 1. General Principles. Openness in government strengthens our democracy, promotes the delivery of efficient and effective services to the public, and contributes to economic growth. As one vital benefit of open government, making information resources easy to find, accessible, and usable can fuel entrepreneurship, innovation, and scientific discovery that improves Americans' lives and contributes significantly to job creation.

Decades ago, the U.S. Government made both weather data and the Global Positioning System freely available. Since that time, American entrepreneurs and innovators have utilized these resources to create navigation systems, weather newscasts and warning systems, location-based applications, precision farming tools, and much more, improving Americans' lives in countless ways and leading to economic growth and job creation. In recent years, thousands of Government data resources across fields such as health and medicine, education, energy, public safety, global development, and finance have been posted in machine-readable form for free public use on Data.gov. Entrepreneurs and innovators have continued to develop a vast range of useful new products and businesses using these public information resources, creating good jobs in the process.

To promote continued job growth, Government efficiency, and the social good that can be gained from opening Government data to the public, the default state of new and modernized Government information resources shall be open and machine readable. Government information shall be managed as an asset throughout its life cycle to promote interoperability and openness, and, wherever possible and legally permissible, to ensure that data are released to the public in ways that make the data easy to find, accessible, and usable. In making this the new default state, executive departments and agencies (agencies) shall ensure that they safeguard individual privacy, confidentiality, and national security.

E-Mail

Tweet

Share



LATEST BLOG POSTS

January 22, 2015 11:19 AM EST

Upskill America: The President's Plan to Help Hardworking Americans Earn Higher-Paying Jobs

The President is calling on businesses across the country to "Upskill America" -- to help workers of all ages earn a shot at better, high-paying jobs, even if they don't have higher education.

January 22, 2015 11:02 AM EST

Happening Today: YouTube Creators Interview President Obama Live from the White House

Watch President Obama's interview with YouTube creators live on Thursday, January 22, at 5:00 p.m. Eastern on WhiteHouse.gov/Live and YouTube.com/WhiteHouse.

January 21, 2015 5:38 PM EST

Precision Medicine: Improving Health and Treating Disease

Last night, at his 2015 State of the Union Address, President Obama announced that he is launching a new precision medicine initiative that will help deliver the right treatment to the right patient at the



e

Sec. 3. Implementation of the Open Data Policy. To facilitate effective Government-wide implementation of the Open Data Policy, I direct the following:

(a) Within 30 days of the issuance of the Open Data Policy, the CIO and CTO shall publish an open online **repository of tools and best practices** to assist agencies in integrating the Open Data Policy into their operations in furtherance of their missions. The CIO and CTO shall regularly update this online repository as needed to ensure it remains a resource to facilitate the adoption of open data practices.



Results (1): Data.gov

<https://www.data.gov/>



[DATA](#) [TOPICS ▾](#) [IMPACT](#) [APPLICATIONS](#) [DEVELOPERS](#) [CONTACT](#)

The home of the U.S. Government's open data

Here you will find data, tools, and resources to conduct research, develop web and mobile applications, design data visualizations, and more.

GET STARTED

SEARCH OVER 137,325 DATASETS



Manufacturing & Trade Inventories & Sales



BROWSE TOPICS



Agriculture



Business



Climate



Consumer



Ecosystems



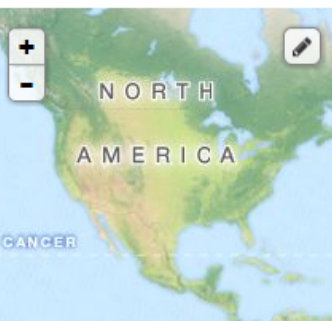
Education



Filter by location

Clear

Enter location...



Map data CC-BY-SA by [OpenStreetMap](#)
Tiles by [MapQuest](#)

Topics

A-Z 1-9

Clear All

AAPI (1963)

Safety (520)

Climate (461)

Energy (419)

Ocean (300)

Show More Topics

Topic Categories

Clear All

137,331 datasets found

Consumer Complaint Database 🔥

Consumer Financial Protection Bureau — These are complaints we've received about financial products and services.

CSV JSON XML

Federal Logistics Information System Web Search (WebFLIS) 🔥

Department of Defense — Federal Logistics Information System Web Search (V essential information about supply items including the National Stock Number

Excel

National Stock Number Extract 🔥

General Services Administration — National Stock Number extract includes the National Stock Numbers (NSNs), NSN item name and descriptions, and current

Excel

Business Identification Numbers Cross-referencing (BINCS) System 🔥

Department of Defense — The Business Identification Number Cross-reference all-in-one search engine that identifies foreign and domestic government/com

HTML

U.S. International Trade in Goods and Services 🔥

US Census Bureau, Department of Commerce — Monthly report that provides including imports, exports, and balance of payments for goods and services. Sta

Dataset Type

A-Z 1-9

Clear All

geospatial (95507)

non-geospatial (41824)

Tags

A-Z 1-9

Clear All

oceanography (28009)

boundaries (12118)

united states (8007)

coral (7817)

animal-studies (7431)

Show More Tags

Formats

A-Z 1-9

Clear All

HTML (29633)

XML (20488)

ZIP (16177)

PDF (10926)

CSV (10190)

Show More Formats

DTV Reception Maps

Federal Communication technology that has tran to offer...

TXT

Food Access Research

Department of Agricultu access indicators for low

HTML HTML HTML

American Community

US Census Bureau, Depa information such as age, data.

csv/bt,xls

Climate Data Online

National Oceanic and At or CDO provides access service. Users can find a

HTML

Great Chile Earthquake



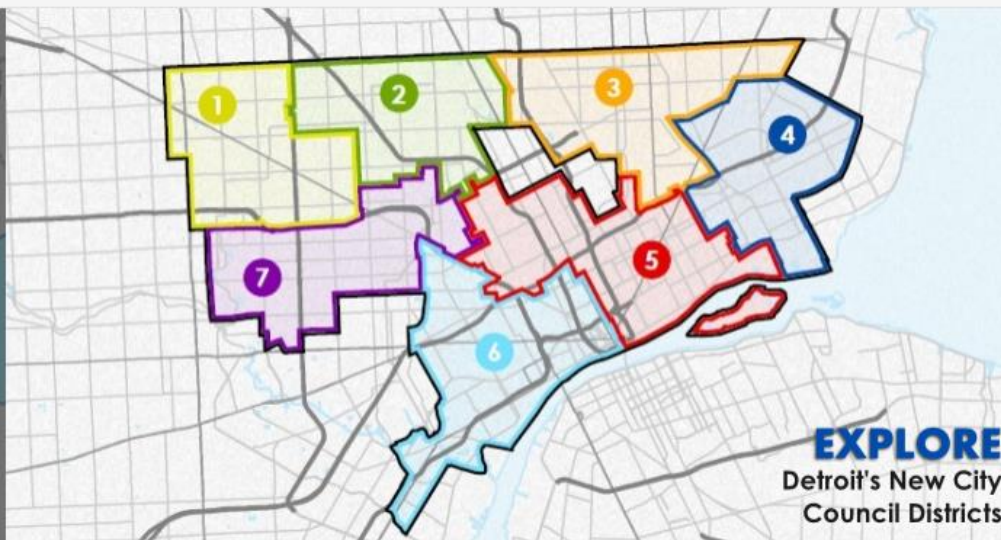
<http://catalog.data.gov/dataset#>

Results (2): ArcGIS Open Data

- Data Driven Detroit (D3)
- Maryland iMAP

<http://d3.d3.opendata.arcgis.com/>





OUR SERVICES

Data Driven Detroit assists our community partners by specializing in the following areas:

Data Collection



Mapping & Visualization



Data Analysis



Information Accessibility



Data-Driven Outcomes



RECENT BLOG POSTS



JAN
12

Four Seasons of Data: Celebrating 15 Months of Motor City Mapping

By Diana Flora Since October 2013, Data Driven Detroit (D3) has had the pleasure of collaborating on Motor City Mapping, a massive project that has included hun...



DEC
23

City of Change: Toward a Neighborhood-Level Analysis

City of Change: Toward a Neighborhood-Level Analysis Over the past several weeks, the City of Change series has looked at how Detroit's residential neighborhood...



DEC
16

City of Change: Dynamics and Impact Potential in Detroit's Neighborhoods

City of Change is a Data Driven Detroit (D3) blog series analyzing changes in Detroit's residential neighborhoods from 2009 through 2014. This series is a colla...



DEC
23

Motor City Mapping Mini-Grants Come to a Successful Close

By Stephanie Edlinger Partners/Funders Data Driven Detroit Michigan Nonprofit Association LOVELAND Technologies Rock Ventures, LLC Detroit Blight Removal Task F...



DEC
18

Detroit Innovation Insights

Photo courtesy of Urban Innovation Exchange, December 2014. Three years ago, D3 and Urban Innovation Exchange (UIX) set out to learn more about urban innovators...



DEC
9

City of Change: Detroit's Continuing Mortgage Crisis

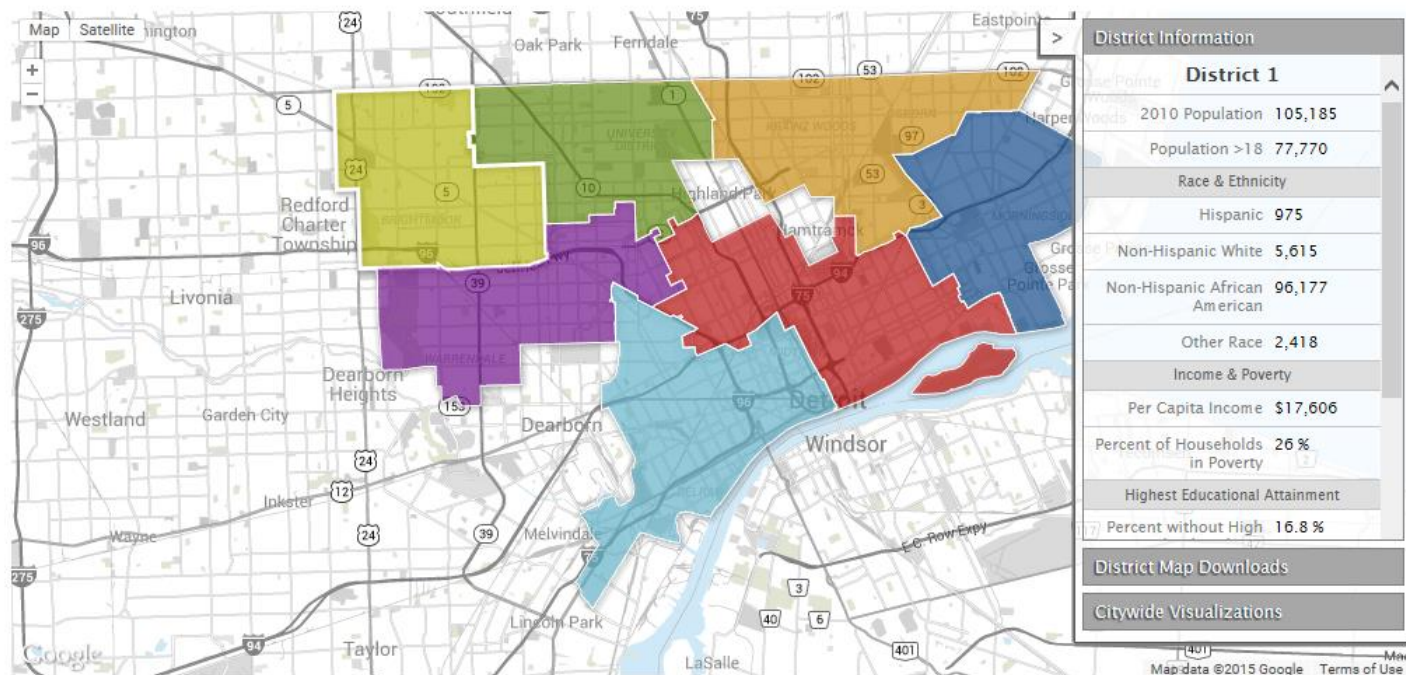
City of Change is a Data Driven Detroit (D3) blog series analyzing changes in Detroit's residential neighborhoods from 2009 through 2014. This series is a colla...

DETROIT ELECTIONS

City Council Districts

This year's upcoming municipal election will be the first time in nearly 100 years that Detroiters will elect the city council from defined districts. Historically, Detroit's nine City Council members have been elected at-large with each of them representing the city as a whole rather than a particular district. However, with the passing of Detroit's new City Charter, which took effect on January 1, 2012, only two members are elected at-large, and seven members are elected by district.

Use this interactive tool to explore the new districts!



Note on Source: All figures have been calculated by aggregating census block group data to council districts. There are minor differences between council district boundaries and the boundaries of block groups.

See Also

- Publius:**
View ballots, find your polling location, and read about candidates.
- Interactive Candidate Map:**
In May 2013, the Detroit News released a map listing residents intending to run for Detroit City Council.
- Council District Series:**
Visit the Detroit Free Press for Rochelle Riley's series of articles examining Detroit's new City Council districts.



MD iMAP

MARYLAND'S MAPPING & GIS DATA PORTAL



HOME GIS DATA CATALOG

Search for open data



☐ SEARCH WITHIN MAP

SEARCH

SHARE



GIS Data Categories



Agriculture



Biota



Boundaries



Business
Economy



Demographics



Elevation



Environment



Geoscientific



Health



Historic



Hydrology



Imagery



Location



Planning
Cadastre



Public Safety



Society



Structure



Transportation



Utility



Weather

<http://imap.maryland.opendata.arcgis.com/>



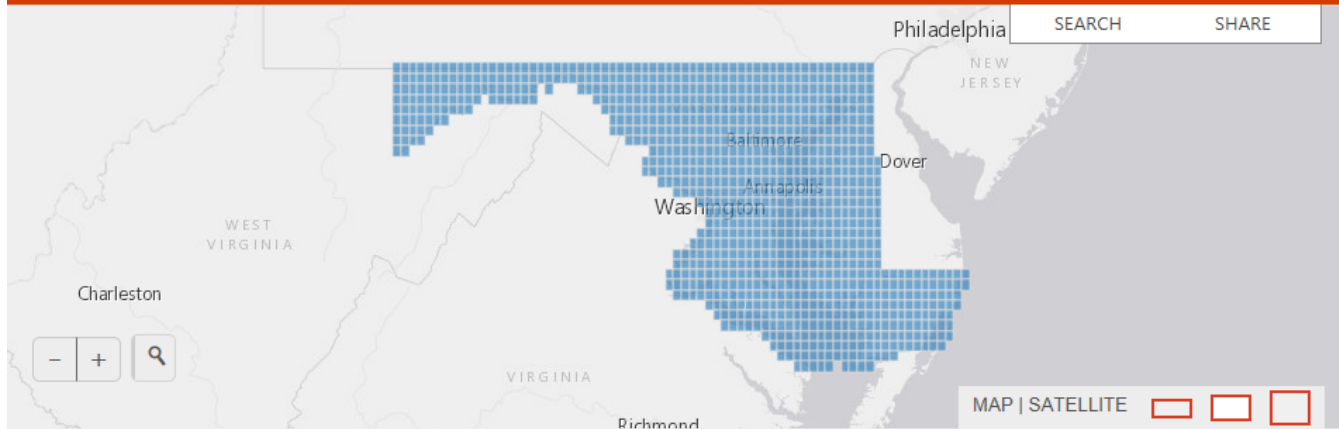


MD iMAP

MARYLAND'S MAPPING & GIS DATA PORTAL



[HOME](#)
[GIS DATA CATALOG](#)



< NAIP Imagery Grid 2007

[SUBSCRIBE](#)

[DOWNLOAD DATASET](#)

[Details](#)

[Table](#)

[Charts](#)

DESCRIPTION

This data layer contains the index grid for the National Agriculture Imagery Program (NAIP) 2007 imagery. The NAIP program is administered by the U.S. Department of Agriculture Farm Service Agency and has been established to support two main FSA strategic goals centered on agricultural production. Owner: U.S.

DATASET ATTRIBUTES

NAIP 2007 Coverage Text	TRUE (882), FALSE (85) ...(1 more)
Photo Date Date or Time	06/08/2007 to 09/23/2007
Quarter Quad Abbreviation Text	Wango322 (1), Accid422 (1), Accid122 (1), Grant422 (1), Grant122 (1) ...(934 more)

ABOUT



Maryland GIS Data Catalog: Imagery

By [mdimapdatacatalog](#) on

December 11, 2014

Updated: 15 days ago

Source <http://imagery.geodata.md.gov/ima...>

Metadata [Maryland Historic NAIP Imagery...](#)

Licensing [This service, or any portion there...](#)

TAGS

[imagery](#) | [NAIP](#) | [agriculture](#) | [vector](#) | [WFS](#) | [MD](#)
[MD iMap](#) | [National Agriculture Imagery Program](#)



Abbreviation Text	Grant422 (1), Grant122 (1) ...(934 more)
Quarter Quad Name Text	FRIENDSVILLE NW (1), FRIENDSVILLE NE (1), ACCIDENT NW (1), ACCIDENT NE (1) ...(968 more)
GIS Shape Geometry	
GIS Shape Area (m) Number	min: 21.04 max: 63,247,005.49 avg: 62,004,803.41 count: 972
GIS Object ID Unique id	min: 1 max: 972 avg: 486.5 count: 972
GIS Shape Length (m) Number	min: 22.54 max: 32,078.46 avg: 31,682.69 count: 972

RELATED DATASETS ?



NAIP Imagery Grid 2011



NAIP Imagery Grid 2005



NAIP Imagery Grid 2009



MD Agricultural Land
Preservation Foundation
Easements

[Contact Us](#) | [Privacy](#) | [Accessibility](#)

45 Calvert Street, Annapolis, MD 21401 | 300-301 West Preston Street, Baltimore, MD 21201
(877) 634-6361



COMMONWEALTH
OFFICE OF
TECHNOLOGY



KyGeoNet News

Commonwealth Map Base Updated

The newly updated Commonwealth Map base now includes all KyFromAbove Imagery from the 2012 acquisition period. Improved symbology and labeling enhances the base and the imagery layers are now visible 2 levels higher than before. Like the new cached street base, this service was also designed to work well in conjunction with Esri's base maps.
[The Commonwealth Map](#)
[TCM Simple Map Viewer](#)

DGI Releases New Cached Street Base for the Commonwealth

Kentucky's GIS users now have another base map option that focuses primarily on streets, airports, rail, and hydrography. The service was designed to work well with Esri's base maps and includes all the layers in the Commonwealth Map Base with the exception of imagery layers. The new base map can be accessed within the Commonwealth Map by selecting the "KyStreets" button in the base map switcher at the top of the viewer.
[The Commonwealth Map](#)
[KyStreet Base Simple Map Viewer](#)

2012 KyFromAbove Imagery Available for Download

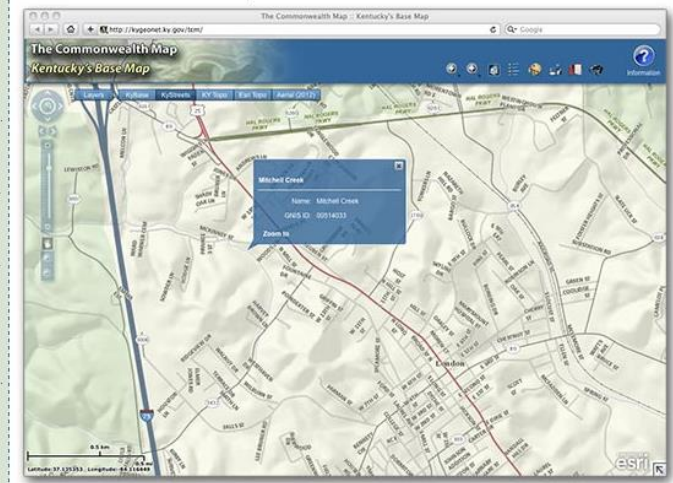
One Foot resolution orthoimagery collected in 2012 by the KyFromAbove Program is now available for download from the KyGeoNet. Use the link below to access the metadata and FTP link for this newly available data.
[Geoportal Link](#)

Download KyFromAbove Imagery using the Commonwealth Map

You can now download the new KyFromAbove 6 Inch Aerial Photography directly from the Commonwealth Map. Simply turn on the "Data Tiles Grid (6 Inch Aerials -2012)" in the Layers listing and zoom into one of the available areas. Click in a 5K tile and you'll be presented with a popup that includes the filename, direct FTP link to the imagery for that tile, and the year it was acquired.
[The Commonwealth Map](#)

Welcome to the Kentucky Geography Network. The KyGeoNet is the Geospatial Data Clearinghouse for the Commonwealth of Kentucky. A variety of datasets can be located and downloaded, static map products can be viewed, and many web mapping applications and services are easily accessible. Use the powerful search capabilities of the Kentucky [Geoportal](#) to locate maps and geographic data content for a particular part of the state or search based on keyword or content type. If you're not looking for data but want to explore some web maps please browse the currently highlighted content using the [KyGovMaps](#) page or check out our guidance documents on [how to connect](#) directly to our ArcGIS Server services.

New Cached Street Base Map



<http://kygeonet.ky.gov/>

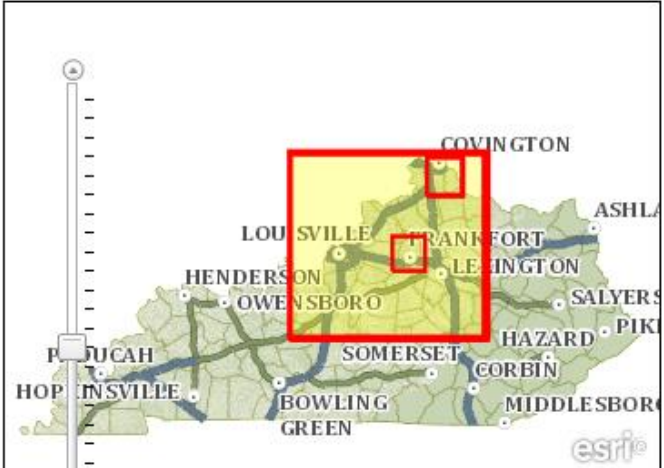
Search

Records shown from: KyGeoNet
Click here to select different site or configure search.

Choose Content Type & Data Category
Clear

WHERE

☒ Anywhere ☐ Intersecting ☐ Fully within



esri®

Results 1-10 of 22 record(s) >

- ☐ Expand results [Zoom To Results](#) [Zoom To Searched Area](#)
- [KYAPED Project Area 1 - Franklin County 6 Inch Imagery](#)
 - [KYAPED Project Area 1 - Northern Kentucky 6 Inch Imagery](#)
 - [KYAPED Project Area 1 - One Foot Imagery](#)
 - [KYAPED Project Area 1 Image Frame Centroids](#)
 - [KYAPED Project Area 1 Flight Paths](#)
 - [KYAPED Project Area 1 Image Frames](#)
 - [KYAPED Project Area 1 - One Foot Imagery Index Grid](#)
 - [KYAPED Project Area 1 - Franklin County 6 Inch Imagery](#)
 - [KYAPED Project Area 1 - Northern Kentucky 6 Inch Imagery](#)
 - [KYAPED Project Area 1 - Northern Kentucky 6 Inch Imagery Index Grid](#)

See results through REST
API: [GEORSS](#) [ATOM](#) [HTML](#) [FRAGMENT](#) [KML](#) [JSON](#) [CSV](#)

<http://kygisserver.ky.gov/geoportal/catalog/main/home.page>



Kentucky Open GIS Data

☐ SEARCH WITHIN MAP

SEARCH

SHARE



Explore the Commonwealth!

Welcome to the Open GIS Data Site for the Commonwealth of Kentucky. Datasets featured on this site will be of interest to a broad range of audiences including those involved in research, community planning, economic development, education, decision-support, engineering, and public policy. More resources will be added to the site over the next few months.

For direct access to the Commonwealth's Geospatial Data Clearinghouse, visit Kentucky's [Geoportal](http://kygovmaps.kygeonet.opendata.arcgis.com/) or browse a variety of interactive maps and apps on our [KyGovMaps](http://kygovmaps.kygeonet.opendata.arcgis.com/) page. Kentucky's GIS Community actively works to provide quality geospatial resources to everyone. *Explore the Commonwealth!*



Panoramic View of Wolfe County, Kentucky

<http://kygovmaps.kygeonet.opendata.arcgis.com/>



Open GIS Data Resources



Ky Railroads WGS84WM

This dynamic map service includes Existing Rail Infrastructure data in the Commonwealth of Kentucky.

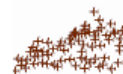
BY KENTUCKY_DGI DECEMBER 11, 2014



Ky City Points WGS84WM

This map service provides access to City Locations in the Commonwealth of Kentucky.

BY KENTUCKY_DGI DECEMBER 11, 2014



Ky Airports WGS84WM

This dynamic map service includes Existing Airports in the Commonwealth of Kentucky.

BY KENTUCKY_DGI DECEMBER 11, 2014



Ky USGS Gages WGS84WM

This map service provides access to hydrologic gauges as maintained by the USGS for the Commonwealth of Kentucky.

BY KENTUCKY_DGI DECEMBER 11, 2014



Ky Schools WGS84WM

This map service provides access to School locations in the Commonwealth of Kentucky. Locations and attributes may be dated.

BY KENTUCKY_DGI DECEMBER 11, 2014



Ky Hospitals WGS84WM

This map service provides access to Hospital locations in the Commonwealth of Kentucky.

BY KENTUCKY_DGI DECEMBER 11, 2014



Ky Federal Trailheads WGS84WM

This map service includes trailhead locations




Ky Tourism Regions WGS84WM

This map service provides access to the Tourism




Ky UKAG Weather Forecasts WGS84WM

[Contact Us](#) | [KyGeoNet](#) | [KyGovMaps](#) | [KyGeo](#)


 Kentucky Open GIS Data

☐ SEARCH WITHIN MAP



MAP | SATELLITE

1-1 of 1 results



Ky Schools WGS84WM

(from KyGovMaps Open Data)

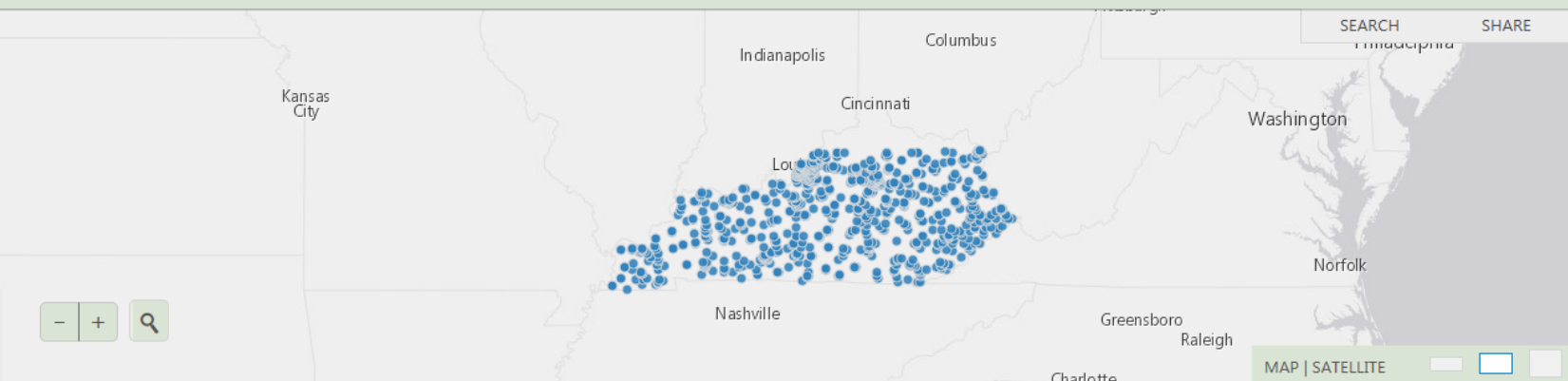
Shared by [Kentucky_DGI](#) on December 11, 2014. Updated a month ago.

This map service provides access to School locations in the Commonwealth of Kentucky. Locations and attributes may be dated.

36 attributes | 1483 rows

My Favorites

click ☆ on any dataset to add to your favorites



< Ky Schools WGS84WM

[SUBSCRIBE](#)[DOWNLOAD DATASET](#)[Details](#)[Table](#)[Charts](#)

DESCRIPTION

This map service provides access to School locations in the Commonwealth of Kentucky. Locations and attributes may be dated.

DATASET ATTRIBUTES

ADDNAME Text	KIPDA (240), BGADD (229), NKADD (142), BRADD (105), LTADD (87) ...(11 more)
ATT_ISSUES Text	
ATT_SOURCE Text	Brent West (152), Mike Burke (62), Charlotte Sue Chowning (35) ...(192 more)
CITY Text	Louisville (148), Lexington (69), Bowling Green (33), Owensboro (27) ...(357 more)
CLASSIFICA Text	Elementary School (738), Four-year High School (227), Middle or Upper Elementary School (221) ...(11 more)
COMMENTS Text	Incorporated city is Powderly. (4), Incorporated city is Hebron Estates. (3) ...(19 more)

ABOUT



KyGovMaps Open Data

By [Kentucky_DGI](#) on December 11, 2014

Updated: a month ago

Source <http://kygisserver.ky.gov/arcgis/rest/services/WG...>

Metadata [Ky Schools WGS84WM](#)

Licensing [Creative Commons Attribution](#)

TAGS

[school](#) | [schools](#) | [education](#)

http://kygovmaps.kygeonet.opendata.arcgis.com/datasets/8aa43965adaf409e8966c6c16c79971c_0



EXAMPLE 1 - KYAPED – LiDAR DEM

- Aerial
- Nominal Pulse Spacing 1 meter or better
- About 70% of state covered
- Conforms to USGS (and FEMA) standards
- KY From Above partners get point cloud
- 5 foot DEMs are available to the public

Folder: /

kyraster.ky.gov/arcgis/rest/services

ArcGIS REST Services Directory

[Home](#) > [services](#)

[JSON](#) | [SOAP](#)

Folder: /

Current Version: 10.11

View Footprints In: [ArcGIS.com Map](#)

Folders:

- [ElevationServices](#)
- [ImageServices](#)
- [TestMapServices](#)
- [Utilities](#)

Services:

None

Supported Interfaces: [REST](#)

ElevationServices/Ky_DEM_KY x

kyraster.ky.gov/arcgis/rest/services/ElevationServices/Ky_DEM_KYAPED_5FT_Hillshade/ImageServer

ArcGIS REST Services Directory

[Home](#) > [services](#) > [ElevationServices](#) > [Ky_DEM_KYAPED_5FT_Hillshade \(ImageServer\)](#)

[JSON](#) | [SOAP](#) | [WMS](#)

ElevationServices/Ky_DEM_KYAPED_5FT_Hillshade (ImageServer)

View In: [ArcGIS JavaScript](#) [ArcGIS.com Map](#) [Google Earth](#) [ArcMap](#)

View Footprint In: [ArcGIS.com Map](#)

Service Description: This Dynamic Image Service provides access to a 5 Foot Digital Elevation Model (DEM) with a hillshade function applied to the service as it becomes available through the KYAPED Program.

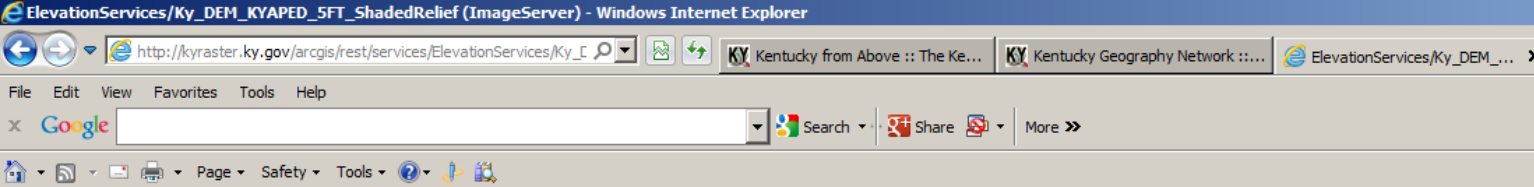
Name: ElevationServices/Ky_DEM_KYAPED_5FT_Hillshade

Description: This Dynamic Image Service provides access to a 5 Foot Digital Elevation Model (DEM) with a hillshade function applied for the service as it becomes available through the KYAPED Program.

Single Fused Map Cache: false

Extent:

XMin: 3798940
YMin: 3356425
XMax: 6019070
YMax: 4308265
Spatial Reference: 102763 (3089)



ArcGIS REST Services Directory

[Home](#) > [services](#) > [ElevationServices](#) > [Ky_DEM_KYAPED_5FT_ShadedRelief \(ImageServer\)](#)

[JSON](#) | [SOAP](#) | [WMS](#)

ElevationServices/Ky_DEM_KYAPED_5FT_ShadedRelief (ImageServer)

View In: [ArcGIS JavaScript](#) [ArcGIS.com Map](#) [Google Earth](#) [ArcMap](#)

View Footprint In: [ArcGIS.com Map](#)

Service Description: This Dynamic Image Service provides access to a 5 Foot Digital Elevation Model (DEM) with a Shaded Relief function applied to the service as it becomes available through the KYAPED Program.

Name: ElevationServices/Ky_DEM_KYAPED_5FT_ShadedRelief

Description: This Dynamic Image Service provides access to a 5 Foot Digital Elevation Model (DEM) with a Shaded Relief function applied for select it becomes available through the KYAPED Program.

Single Fused Map Cache: false

Extent:

XMin: 3798940
YMin: 3356425
XMax: 6019070
YMax: 4308265
Spatial Reference: 102763 (3089)

Initial Extent:

XMin: 3798940
YMin: 3356425
XMax: 6019070
YMax: 4308265
Spatial Reference: 102763 (3089)

Full Extent:

XMin: 3798940
YMin: 3356425
XMax: 6019070
YMax: 4308265
Spatial Reference: 102763 (3089)

Pixel Size X: 5.0

http://kyraster.ky.gov/arcgis/rest/services/ElevationServices/Ky_DEM_KYAPED_5FT_ShadedRelief/ImageServer

Details

Add ▾

Basemap

Save ▾

Share

Print

Directions

Measure

Bookmarks

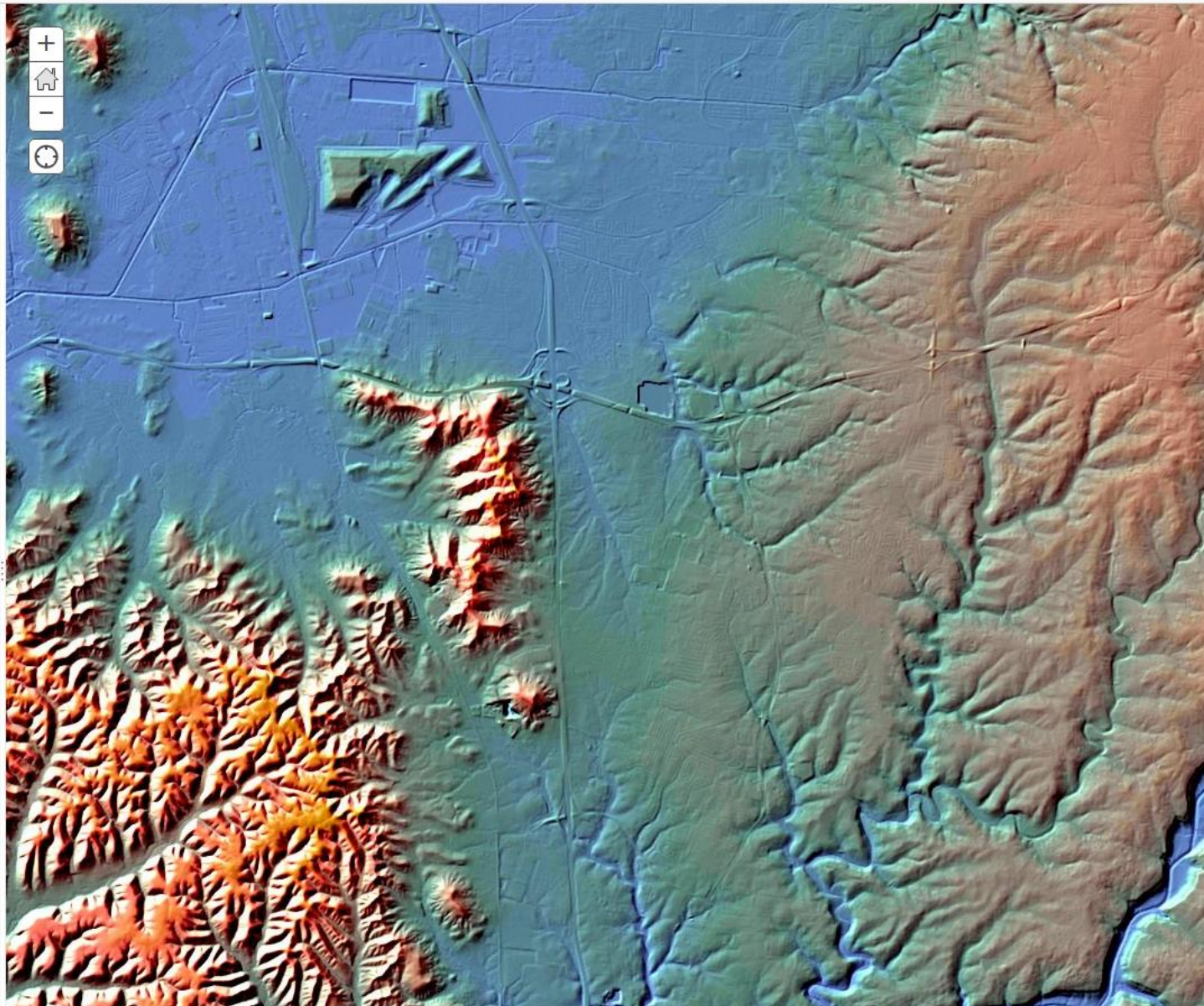
Find address or place

About

Content

Legend

Contents

☒ Ky DEM KYAPED 5FT ShadedRelief ▾☐ Topographic ▾

EXAMPLE 2: KYAPED – Aerial Multispectral Data

- Aerial
- Orthorectified – high quality, numerous GCPs
- High spatial resolution (6 inch, 1 foot)
- Standard spectral resolution (4 bands)
- Standard radiometric resolution (8-bit depth)
- Episodic revisits (*funding dictates frequency!*)
- Spatial accuracy: meter-range

ArcGIS REST Services Directory

[Home](#) > [services](#) > [ImageServices](#)

[JSON](#) | [SOAP](#)

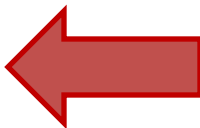
Folder: ImageServices

Current Version: 10.11

View Footprints In: [ArcGIS.com Map](#)

Services:

- [ImageServices/Ky Benton 2009 1FT](#) (ImageServer)
- [ImageServices/Ky Boone 2007 6IN](#) (ImageServer)
- [ImageServices/Ky Bullitt 2009 6IN](#) (ImageServer)
- [ImageServices/Ky CanopyClosure 2001 30M](#) (ImageServer)
- [ImageServices/Ky Clark 2011 1FT](#) (ImageServer)
- [ImageServices/Ky Clark 2011 6IN](#) (ImageServer)
- [ImageServices/Ky DOQ BW PHASE1 1M](#) (ImageServer)
- [ImageServices/Ky DOQ BW PHASE2 1M](#) (ImageServer)
- [ImageServices/Ky Fayette 2007 6IN](#) (ImageServer)
- [ImageServices/Ky Fayette 2010 1FT](#) (ImageServer)
- [ImageServices/Ky Frankfort 2006 1FT](#) (ImageServer)
- [ImageServices/Ky Geologic Quadrangle Maps](#) (ImageServer)
- [ImageServices/Ky Henderson 2009 1FT](#) (ImageServer)
- [ImageServices/Ky ImperviousAreas 2001 30M](#) (ImageServer)
- [ImageServices/Ky Jefferson 2009 6IN](#) (ImageServer)
- [ImageServices/Ky KLCD 2001 30M](#) (ImageServer)
- [ImageServices/Ky KRG LEGACY](#) (ImageServer)
- [ImageServices/Ky KRG MUTED](#) (ImageServer)
- [ImageServices/Ky KRG](#) (ImageServer)
- [ImageServices/Ky KYAPED 2012 1FT IR](#) (ImageServer)
- [ImageServices/Ky KYAPED 2012 1FT WGS84WM](#) (ImageServer)
- [ImageServices/Ky KYAPED 2012 1FT](#) (ImageServer)
- [ImageServices/Ky KYAPED 2013 1FT IR](#) (ImageServer)
- [ImageServices/Ky KYAPED 2013 1FT WGS84WM](#) (ImageServer)
- [ImageServices/Ky KYAPED 2013 1FT](#) (ImageServer)
- [ImageServices/Ky KYAPED Franklin 2012 6IN](#) (ImageServer)
- [ImageServices/Ky KYAPED McCracken 2013 6IN IR](#) (ImageServer)
- [ImageServices/Ky KYAPED McCracken 2013 6IN](#) (ImageServer)
- [ImageServices/Ky KYAPED NKY 2012 6IN](#) (ImageServer)
- [ImageServices/Ky LOJIC 2012 6IN](#) (ImageServer)
- [ImageServices/Ky Mayfield 2009 1FT](#) (ImageServer)
- [ImageServices/Ky Murray 2009 1FT](#) (ImageServer)
- [ImageServices/Ky NAIP 2004 1M](#) (ImageServer)
- [ImageServices/Ky NAIP 2006 2FT](#) (ImageServer)
- [ImageServices/Ky NAIP 2008 1M](#) (ImageServer)
- [ImageServices/Ky NAIP 2010 1M](#) (ImageServer)
- [ImageServices/Ky NAIP 2012 1M](#) (ImageServer)
- [ImageServices/Ky NKAPC 2007 6IN](#) (ImageServer)



Details Add Basemap

Save

Share

Print

Directions

Measure

Bookmarks

Find address or place

Image Display

Set image display for: Ky_KYAPED_2012_1FT_IR

Renderer

User Defined Renderer

RGB composite

1 2 3

Requesting band information...

Image Enhancement

Apply contrast enhancements to improve the image display.

Stretch Type:

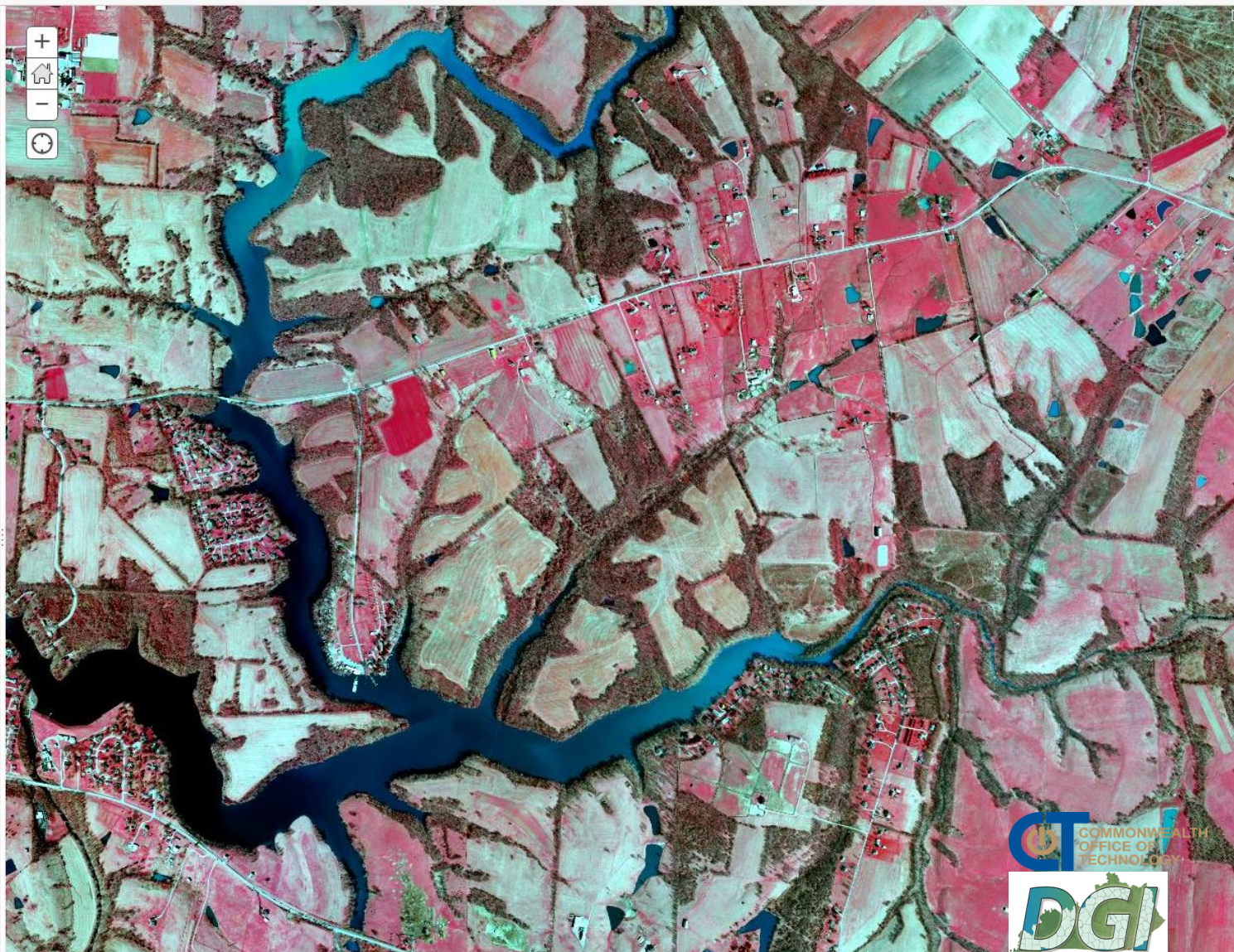
Standard Deviation

Trim extreme pixel values beyond 2 standard deviations.

☒ Dynamic range adjustment

Gamma:

0.1 10



EXAMPLE 3: NAIP (multispectral)

- Aerial
- Orthorectified – high quality, numerous GCPs
- High spatial resolution (1 meter)
- Standard spectral resolution (4 bands)
- Standard radiometric resolution (8-bit depth)
- Periodic revisits (*every two years*)

2004, 2006, 2008, 2010, 2012, 2014

- Spatial accuracy: meter-range

Image Display

Set image display for: Ky_NAIP_2012_1M

Renderer

User Defined Renderer ▾

RGB composite

4 ▾ 1 ▾ 2 ▾

Image Enhancement

Apply contrast enhancements to improve the image display.

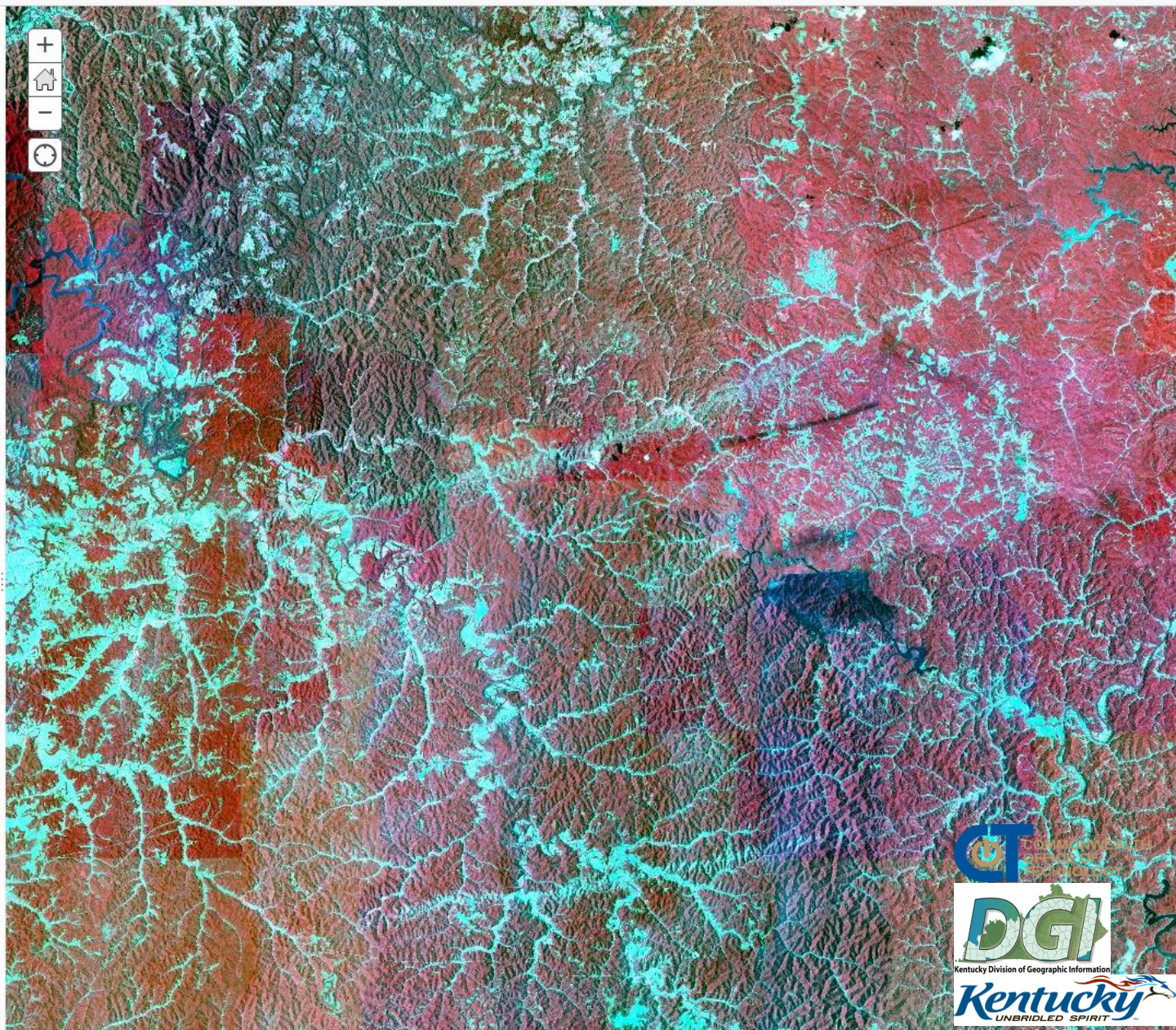
Stretch Type:

Standard Deviation ▾

Trim extreme pixel values beyond 2 standard deviations.

☒ Dynamic range adjustment

Gamma: 0.1 10



EXAMPLE 4: Story Maps

Kentucky Story Maps

This group includes Kentucky-specific Story Map and Map Tour applications created with esri's arcgis.com templates. Use these applications to explore the Commonwealth!



KyFromAbove - Imagery

Web Mapping Application by Kentucky_DGI. Last modified Jan 6, 2015.

This Story Map Series provides an overview of imagery acquired through the KyFromAbove Program.

(201 views)



Kentucky's Recreational Resources

Web Mapping Application by Kentucky_DGI. Last modified Jan 6, 2015.

This story map series references web maps that include information about multi-use trails, state park facilities, hunting, fishing, and wildlife viewing opportunities in Kentucky.

(303 views)

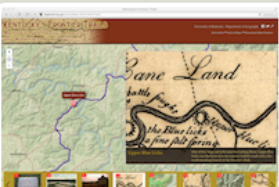


KyFromAbove - Elevation

Web Mapping Application by Kentucky_DGI. Last modified Jan 6, 2015.

This Story Map Series provides an overview of LiDAR-derived elevation data acquired through the KyFromAbove Program.

(174 views)



Kentucky's Frontier Trails

Web Mapping Application by Kentucky_DGI. Last modified Dec 3, 2014.

This custom Story Map application is an online companion to the printed map product entitled "Kentucky's Frontier Trails"

(11 views)



Kentucky State Park Lodges

Web Mapping Application by Kentucky_DGI. Last modified Feb 5, 2014.

This custom Story Map features the Lodges found at State Parks in the Commonwealth of Kentucky.

(414 views)



Kentucky Bourbon Trail Craft Tour

Web Mapping Application by Kentucky_DGI. Last modified Jan 29, 2014.

This custom story map features the Kentucky Bourbon Trail Craft Tour.

(24 views)

This group includes Kentucky-specific Story Map and Map Tour applications created with esri's arcgis.com templates. The Kentucky Division of Geographic Information collaborated with the appropriate agencies to prepare the content for each application. Use these applications to explore the Commonwealth!



parks.ky.gov
www.kentuckytourism.com
Kentucky Geological Survey
Kentucky Division of Forestry
kygeonet.ky.gov
kygovmaps

*Click [here](#) to learn more about
Storytelling with maps.*

<http://kygeonet.ky.gov/govmaps/KyStoryMapsGallery/>

 COMMONWEALTH
OFFICE OF
TECHNOLOGY

 DGI
Kentucky Division of Geographic Information

 Kentucky
UNBRIDLED SPIRIT

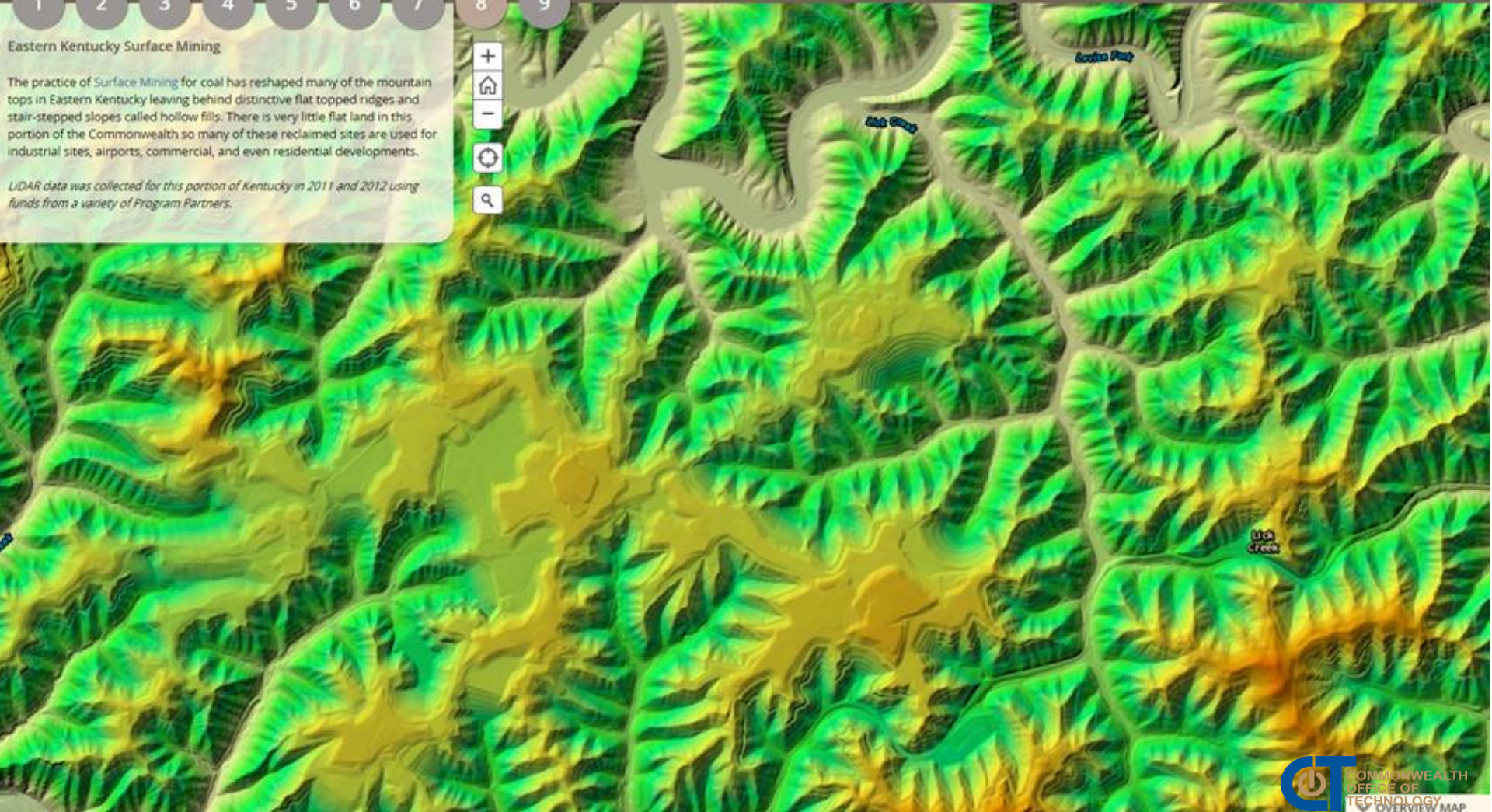
KyFromAbove - Elevation

- 1
- 2
- 3
- 4
- 5
- 6
- 7
- 8
- 9

Eastern Kentucky Surface Mining

The practice of Surface Mining for coal has reshaped many of the mountain tops in Eastern Kentucky leaving behind distinctive flat topped ridges and stair-stepped slopes called hollow fills. There is very little flat land in this portion of the Commonwealth so many of these reclaimed sites are used for industrial sites, airports, commercial, and even residential developments.

LIDAR data was collected for this portion of Kentucky in 2011 and 2012 using funds from a variety of Program Partners.



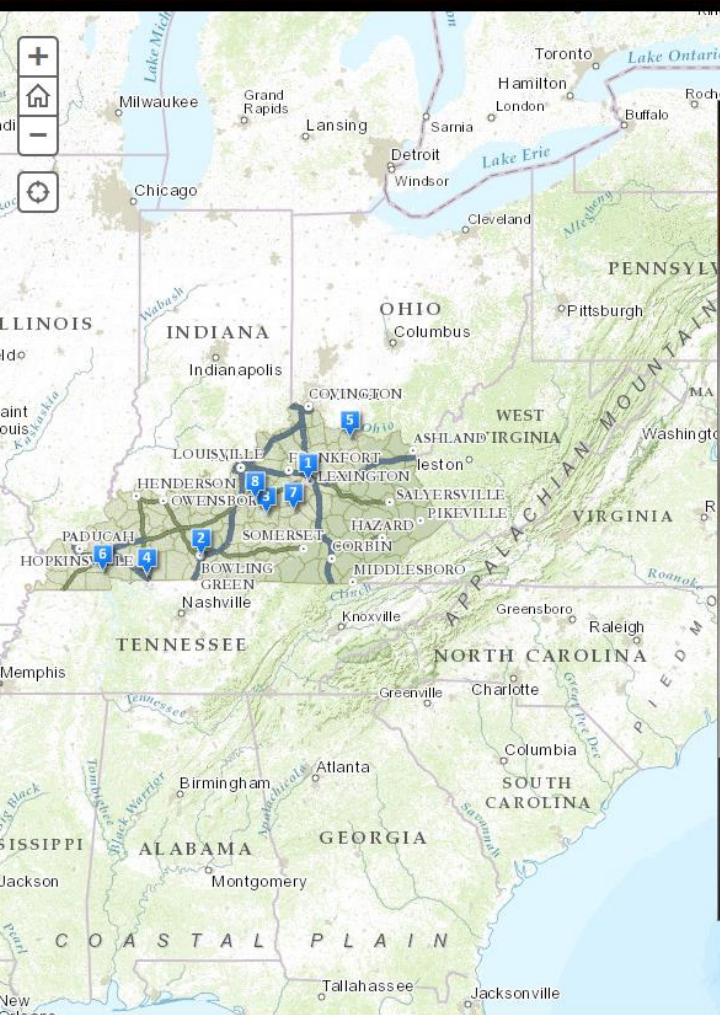


KENTUCKY BOURBON TRAIL CRAFT TOUR

The essential adventure for Bourbon enthusiasts

Kentucky Bourbon Trail Craft Tour

KyGeoNet | KyGovMap



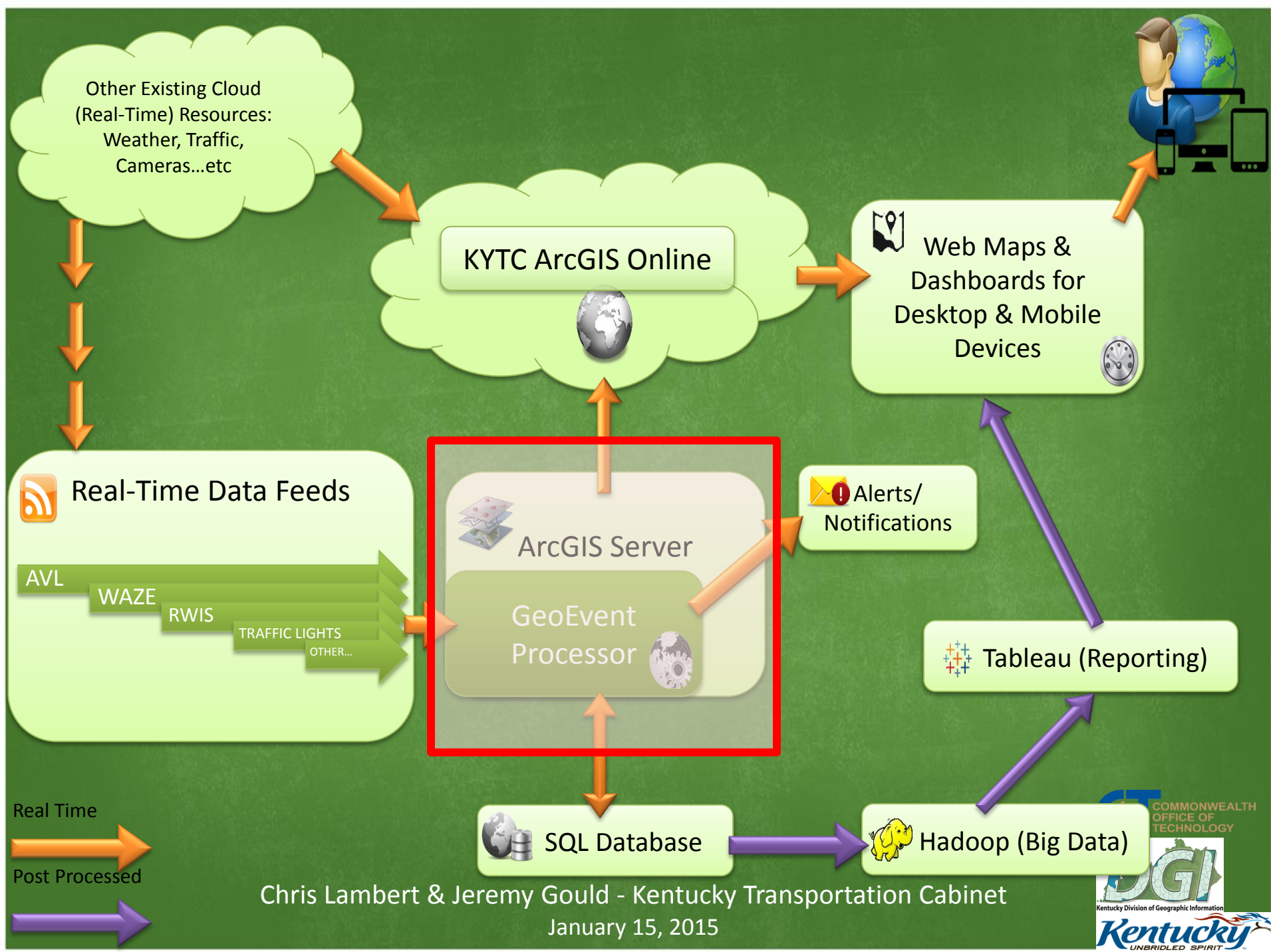
Welcome to the Kentucky Bourbon Craft Tour!

The Kentucky Bourbon Trail Craft Tour® is an essential adventure for Bourbon enthusiasts. Winding through the hills and fields of Kentucky, this tour takes you further into the Kentucky Bourbon industry than ever before. This innovative tour is for those looking to experience Kentucky Bourbon at its very core. Try new brands and collect all eight distillery stamps to earn an exclusive reward through our Passport program!



<http://kygeonet.ky.gov/StoryMaps/KyBourbonTrailCraftTour/#>

EXAMPLE 5: Crowdsourcing/Data Mining/Mobile GIS



Chris Lambert & Jeremy Gould - Kentucky Transportation Cabinet
January 15, 2015

Thank you.

Questions?

Contact Information:

Demetrio P. Zourarakis

demetrio.zourarakis@ky.gov

502-564-6246

<http://gis.ky.gov>



KENTUCKY

CT COMMONWEALTH
OFFICE OF
TECHNOLOGY

DGI
Kentucky Division of Geographic Information
Kentucky
UNBRIDLED SPIRIT